

WAY IN WONDERS

What do you know to be real even though you've never seen it?

Are these things real, not real, or are you not sure?

Write them on a 1–10 scale to show 1 (not real) to 10 (totally real)

- Wind
- Aliens
- Love
- Space
- Energy
- Mars
- Time

1

10

How can you know they are real if you can't see them?

I SPY

Jesus did lots of stuff that people might find hard to believe really happened. See if you can find him pictured doing some of these amazing things:

- Walking on water
- Calming a storm
- Turning water into wine
- Catching lots of fish
- Bringing a dead girl back to life
- Dying and coming back to life

ALIVE

Kids Snack Sheet

JESUS APPEARS TO THOMAS

THOMAS MEETS JESUS

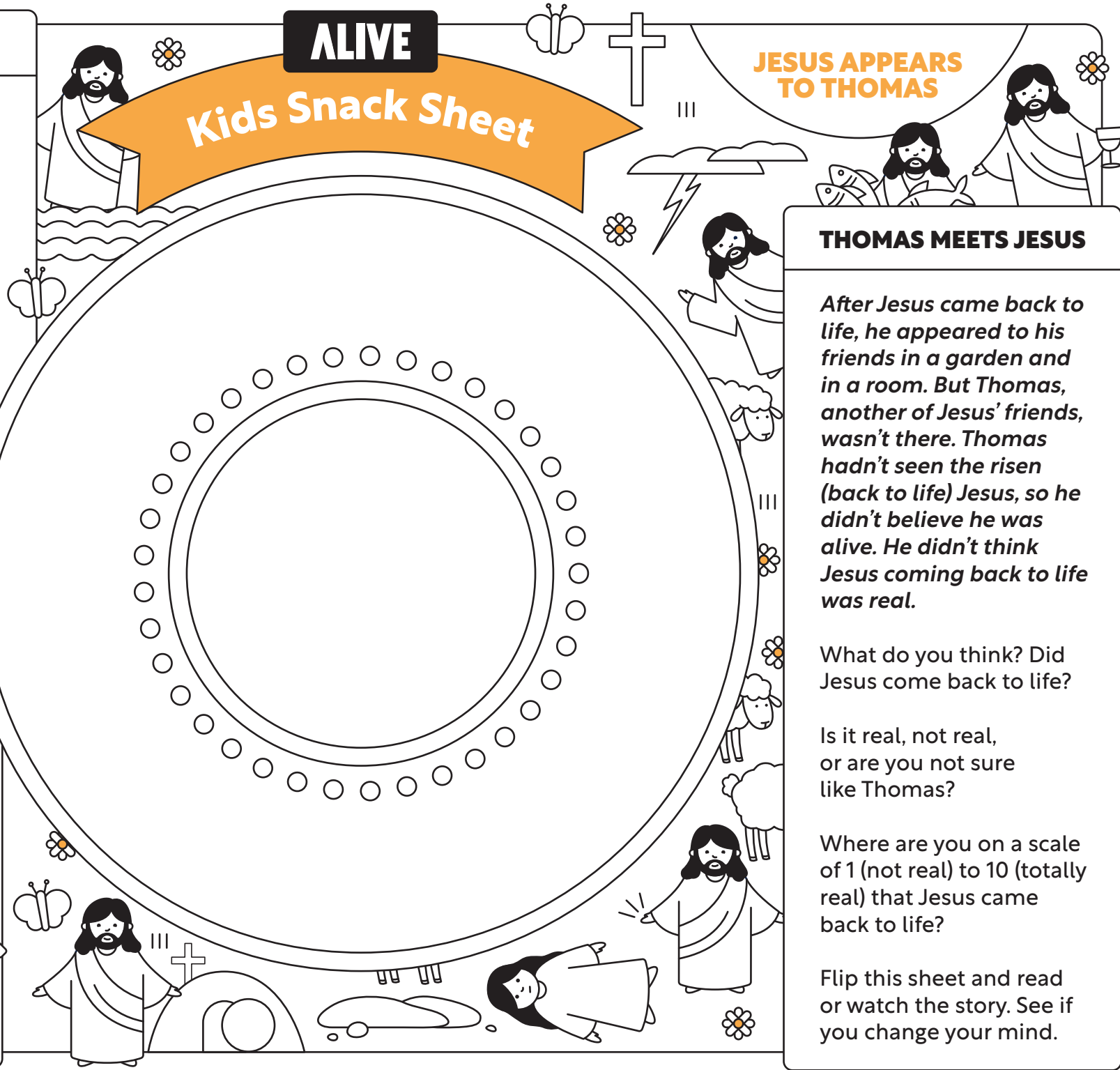
After Jesus came back to life, he appeared to his friends in a garden and in a room. But Thomas, another of Jesus' friends, wasn't there. Thomas hadn't seen the risen (back to life) Jesus, so he didn't believe he was alive. He didn't think Jesus coming back to life was real.

What do you think? Did Jesus come back to life?

Is it real, not real, or are you not sure like Thomas?

Where are you on a scale of 1 (not real) to 10 (totally real) that Jesus came back to life?

Flip this sheet and read or watch the story. See if you change your mind.





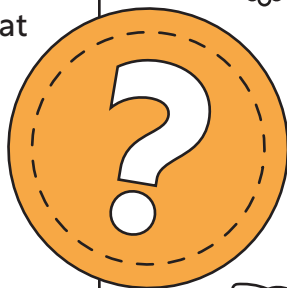
READ OR WATCH:
The Awesome Easter Surprise



WATCH:
The Easter Poem

HEAD SCRATCHING QUESTIONS

- 1 If this story happened today what would it look like?
- 2 What is the story showing and telling me?
- 3 Could it make a difference to my life? How?
- 4 Did it make a difference?



OVER TO YOU

Have you got any questions?

PUT YOURSELF IN THE PICTURE

Thomas changes from not being sure that Jesus had come back to life to believing that he had. Thomas changed his mind because he was able to see Jesus and even touch Jesus' wounds.

We can't touch Jesus' wounds today, but we can still believe that he is alive.

What helps you to believe that Jesus is real and alive?

What would help you to believe that Jesus is alive?

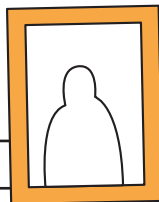
Go back to your 1 (not real) to 10 (totally real) scale. Where are you now?

For more activities scan the QR code to check out The In-Between Time resources on Bible Society's website.



EXTRA

Christians call believing in Jesus, even though we can't touch him, 'faith'. Faith is when we say, 'What if?' or 'Possibly' and even, 'Well let's try it and see ...' Do you have faith? Are you a 'What if?' A 'Possibly' or a 'Let's try it and see'? Look at your 1-10 scale to help you decide!



ALIVE